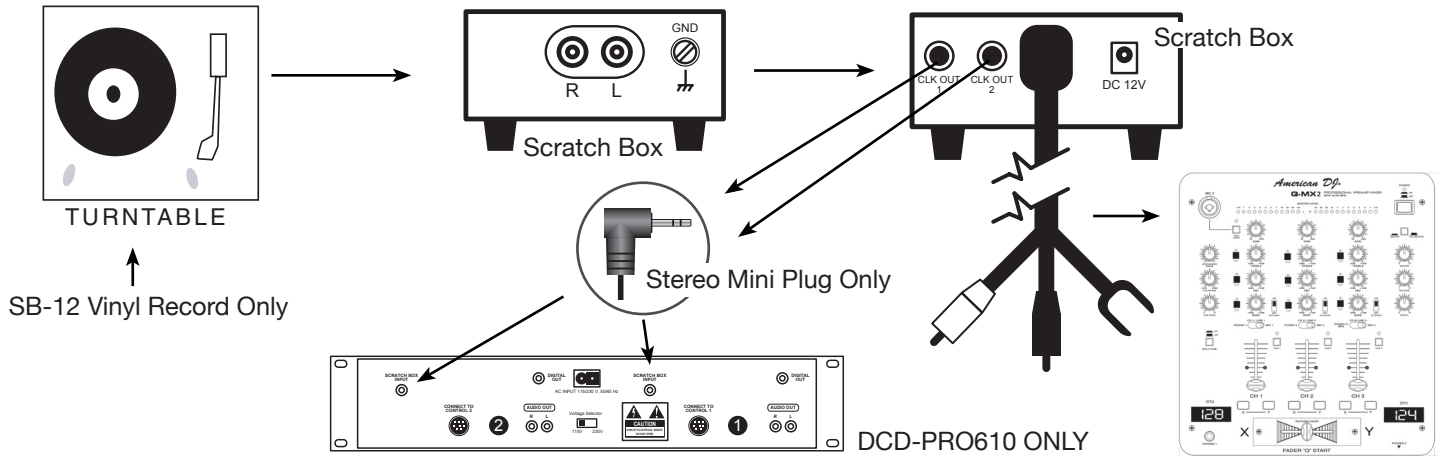


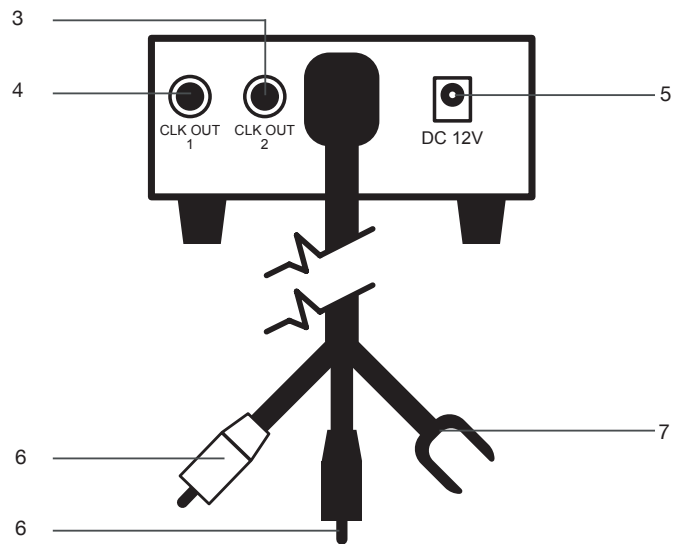
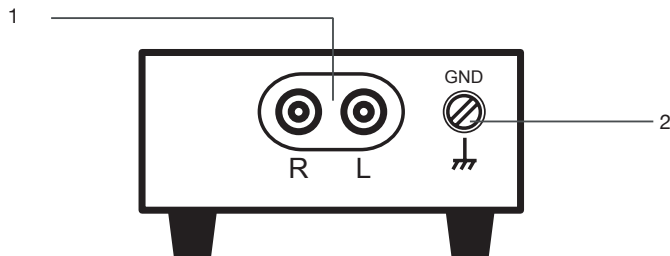
SCRATCH BOX SET UP

Warning! Be sure to make all connections before powering the unit!



Scratch Box™ - The Scratch Box™ is compatible with any turntable. The above diagram briefly details set-up procedures.

Note: The Scratch Box™ will only function with the included SB-12 Blue Vinyl Record. Replacement Vinyl is available from American Audio.



1. PHONO INPUTS - These are stereo phono inputs. Connect a turntable's output RCA's to these jacks. The right stereo channel is represented by the red female RCA and labeled with "R."

2. PHONO GROUND - This ground connector is used to extend the reach of the turntable's ground connector. Connect the turntable's ground cable to this connector to avoid hum and pops associated with phono cartridges.

3. CHANNEL 2 CONTROL OUTPUT - This control jack is used to send the signal coming from the turntable to the CD player. Connect this output to the channel two scratch box insert on the rear of the CD transport unit. Be sure to only use the supplied stereo mini plugs. Using mono mini plugs may cause your CD to play in reverse.

4. CHANNEL 1 CONTROL OUTPUT - This control jack is used to send the signal coming from the turntable to the CD player. Connect this output to the channel one scratch box insert on the rear of the CD transport unit. Be sure to only use the supplied stereo mini plugs. Using mono mini plugs may cause your CD to play in reverse.

5. POWER SUPPLY INPUT - Connect the power supply included with the unit to power the Scratch Box.™

6. PHONO OUTPUTS - These outputs are used to send the turntable's analog signal to your mixer. The left channel is represented by the white RCA connector, the red represents the right channel.

7. GROUND OUTPUT - Connect the turntable's ground cable to this connector to avoid hum and pops associated with phono cartridges.